



**City of North St. Paul
City Council
Workshop Meeting Agenda**

**April 21, 2026
5:15 PM**

The City Council Workshop Meeting will be conducted on **April 21, 2026** at 5:15 p.m. in the Council Chambers at City Hall, located at 2400 Margaret St., North St. Paul.

You can watch the meeting on our YouTube channel here: [**tinyurl.com/NSPYouTube**](https://www.youtube.com/NSPYouTube)

I. Call to Order

II. Roll Call

Council Member Nordby
Council Member Woods
Council Member McKenzie
Council Member Schweer
Mayor Monge

III. Adopt Agenda

IV. Topic(s)

- A. Century College Presentation of Student Built Home Interior Design
- B. Lead Water Service Line Inventory Program Update

V. Other Business

VI. Adjournment

Members may be participating by Interactive Technology.

The next regularly scheduled City Council Workshop meeting is May 5, 2026.



To	Date
Honorable Mayor Monge and City Council	April 21, 2026

Agenda Placement # IV.A

Topic(s)

Subject

Century College Presentation of Student Built Home Interior Design

Background/Facts

Design-Build Partnership - Century College Design Team Presentation

Financial Impact

Recommended Action

Attachments

1. Design Build Partnership Ideation
- Respectfully submitted,

CENTURY
COLLEGE



Design-Build Partnership

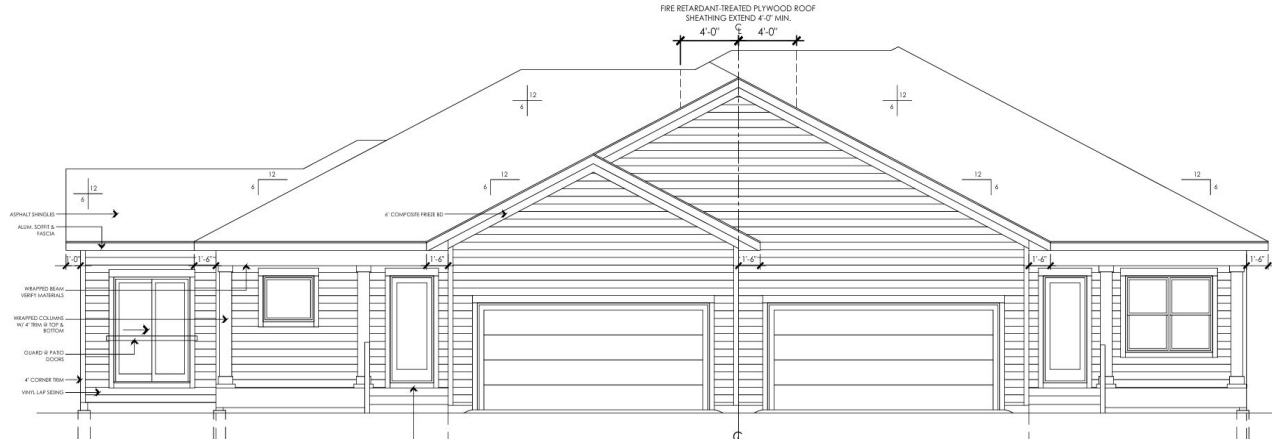
Century College Interior Design

Design Statement

Our goal for this project was to design a twin home with two unique spaces that feel cohesive as a unit and fit the site location. Our approach was to define the spaces uniquely by assigning different design styles for each unit. In Unit A we aimed to create a transitional style home with a grounding color palette of earthy browns and greens. In Unit V we chose to create a contemporary style living space and selected a more vibrant color palette of blues and orange. In both units we aimed to design spaces that are approachable and select finishes that are timeless.

Exterior

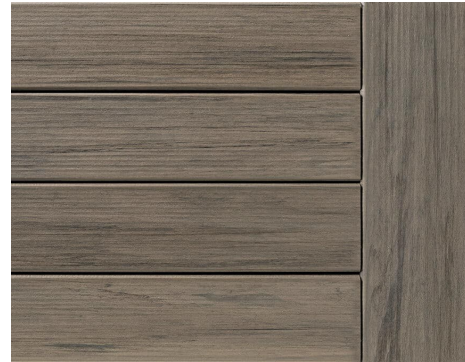
Lighting



Siding



Decking



Doors



Unit A - Color Palette & Hard Finishes

Flooring



Lighting



Transitional Unit

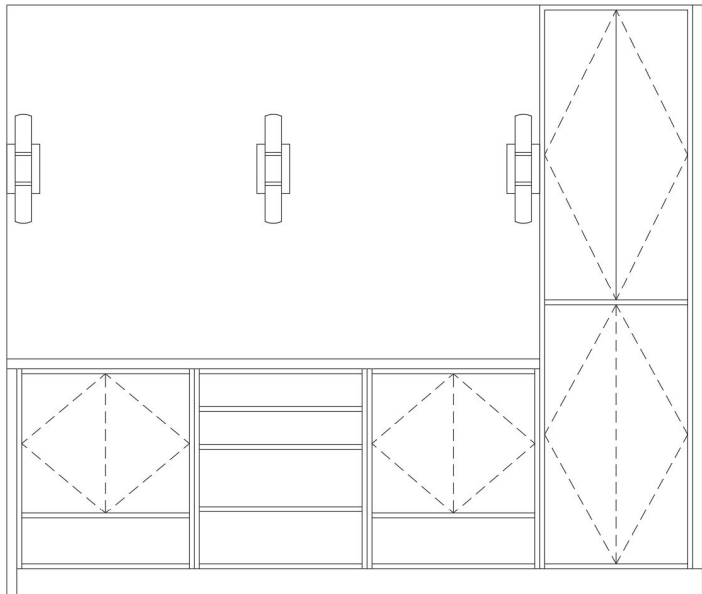
A grounding palette of earthy browns and greens, with black plumbing and lighting finishes.

Kitchen



Walls & Trim

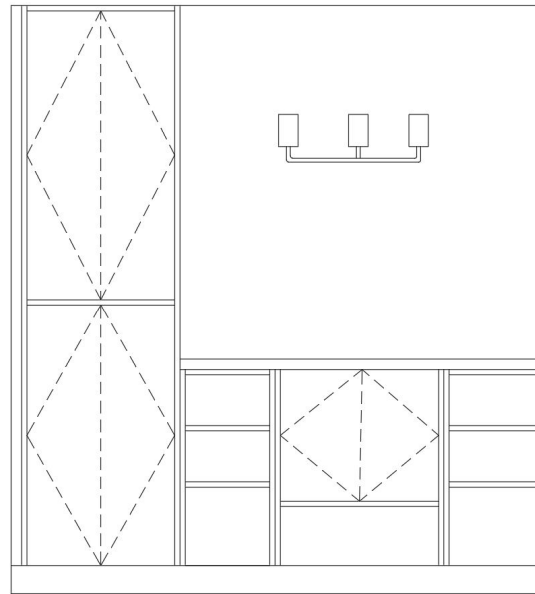




Owner Bathroom

SW 9173
Shiitake

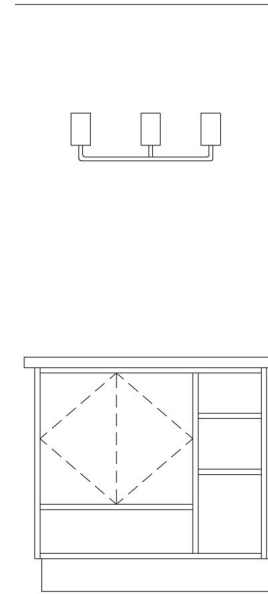
SW 9111
Antler Velvet



Lower Bathroom

SW 6141
Softer Tan

SW 6129
Restrained Gold



Main Bathroom

SW 6170
Techno Gray

Unit V - Color Palette & Hard Finishes

Lighting:



Flooring:



Walls and trim



Contemporary Unit

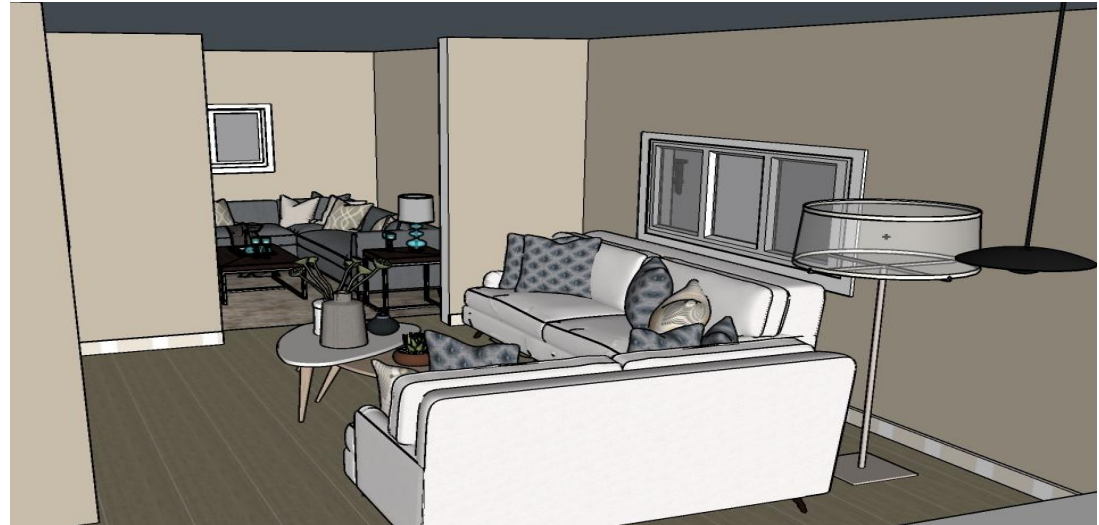
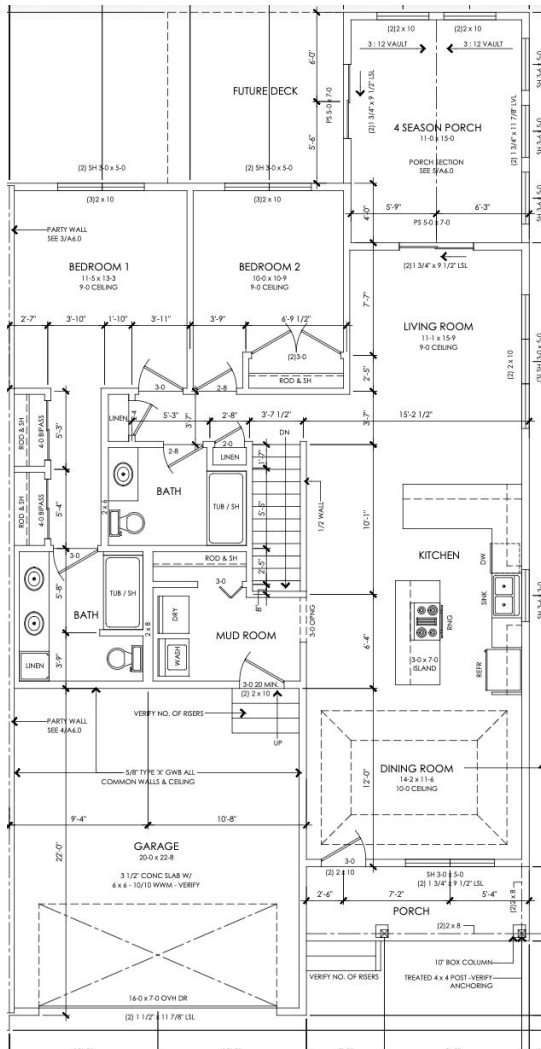
Vibrant palette with blues, oranges, and bronze finishes

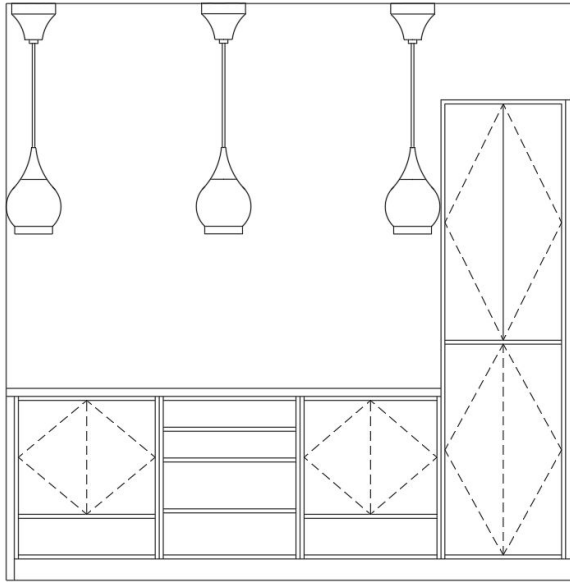
Kitchen



Unit V

Renderings, Elevations, & Floor Plan

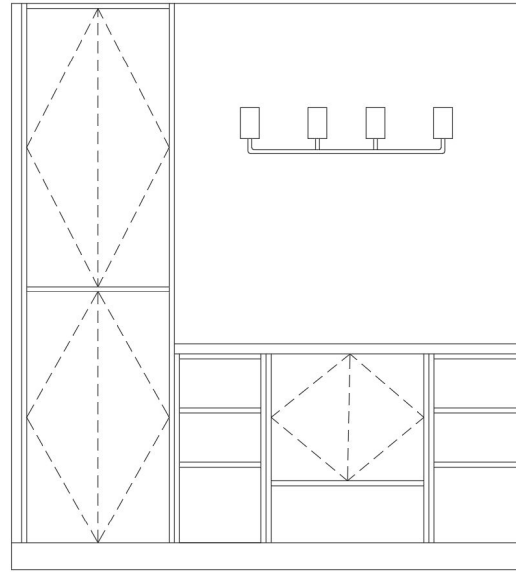




Owner Bathroom

SW 9166
Drift of Mist

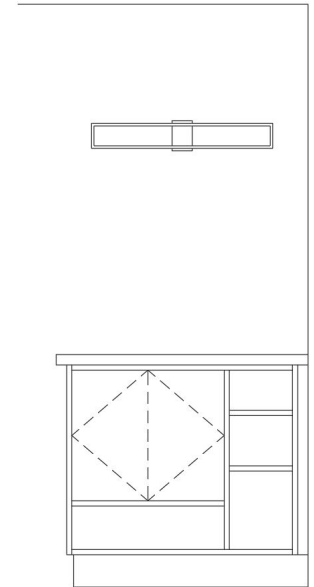
SW 7652
Mineral Deposit



Lower Bathroom

SW 6232
Misty

SW 6220
Interesting Aqua



Main Bathroom

SW 9163
Tin Lizzie

Thank you!

Unit V color pallet

SW 6232
Misty

SW 9166
Drift of Mist

SW 9163
Tin Lizzie

SW 9165
Gossamer Veil

SW 7703
Earthen Jug

SW 9149
Inky Blue

Design Build Partnership Ideation

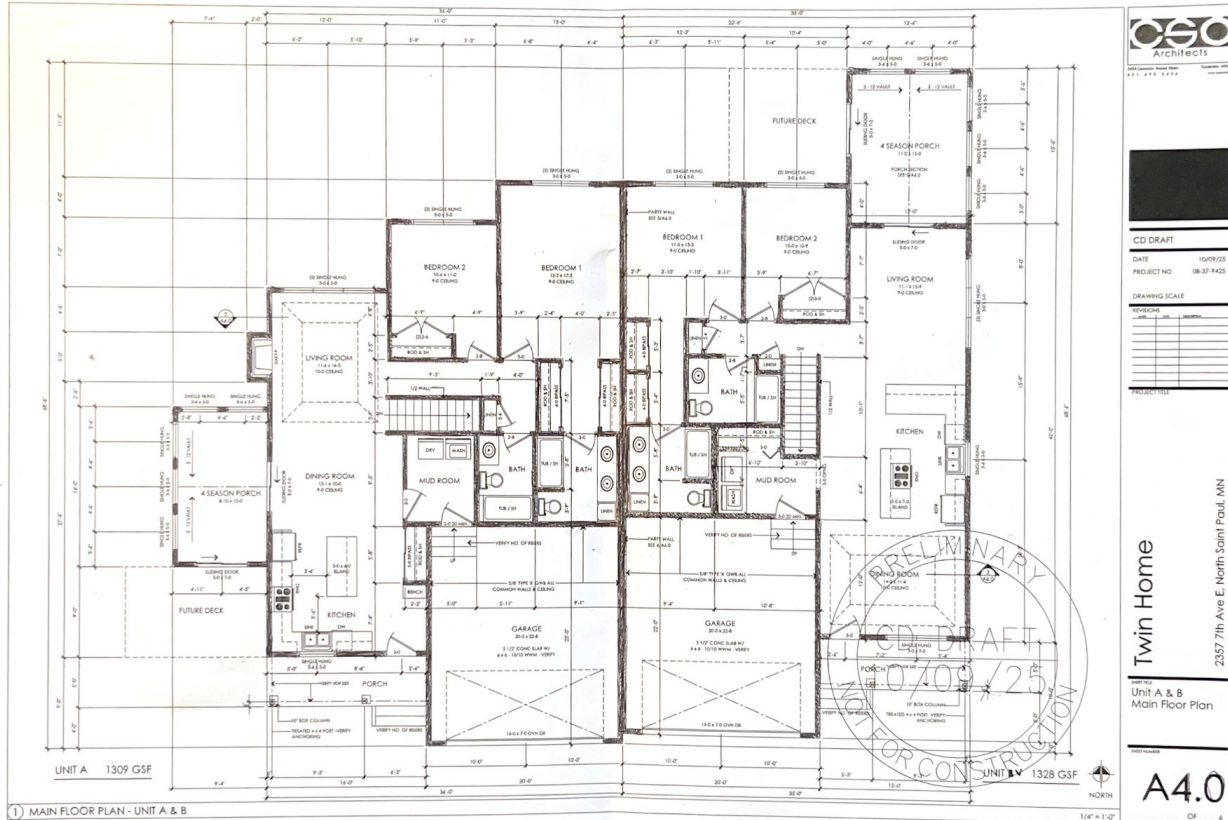
Spring 2026

Presentation

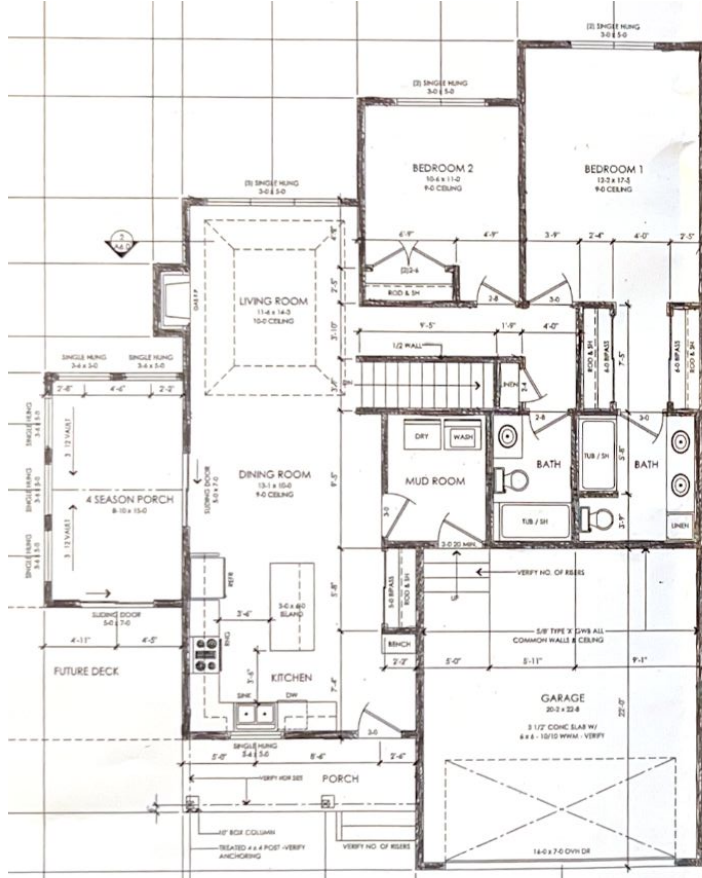
1. Design statement written. Twin home we haven't done before, both units are different so we decided to use different styles, contemporary vs. transitional
2. Powerpoint presentation for her to put on the screens
3. Boards held - divide up

Floor Plan

2357 7th Ave E, North Saint Paul, MN



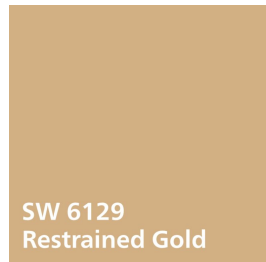
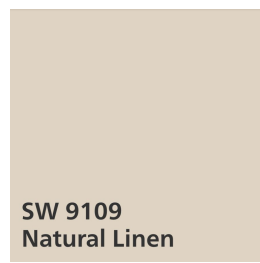
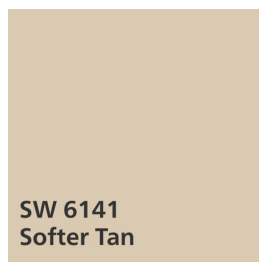
Unit A



- 1,309 sq. ft
- Traditional/Transitional side
- Fireplace
- Vaulted ceiling in living room
- Front door entrance into kitchen

Unit A

Traditional/Transitional



Kitchen Cabinets

Clear coat walnut lowers

Painted uppers

Flat face with bead on both



**^ this is what we
told Tom, we could
still change it!**



PAINT COLORS

Natural linen SW 9109
Foyer, Kitchen
Wall Cab



Connected Gray SW 6165
Mudroom Cabinets



Antler Velvet
Owners Bath
Vanity



PAINT COLORS

Malabar SW 9110
Main floor bath
Vanity



Restrained Gold SW 6129
Lower Level bath
vanity



Friendly Yellow
SW 6680 Lower
Level Bath
Vanity

Flooring Selections



American Standard LVP
6204 Islamorada
Throughout first floor



Tarkett LVT
Travertino, Horizon
Lower Level Bathroom



Step By Step Carpet
Dwellings, Warm Sand
Stairs & Basement

Tile Selections



Portobello America
Lighthouse & Lighthouse Stairs, Sunlight
Kitchen Backsplash

Grout: #541, Walnut



TILE DESIGN - HORIZONTAL LAY



Row 9 - All flat

Row 8 - Alternating

Row 7 - All flat

Row 6 - Alternating

Row 5 - All flat

Row 4- Alternating

Row 3 - All flat

Row 2 - Alternating

Row 1 - All flat

SEND TO TOM H



3' LONG BENCH

PAINTED IN

SW6165

'CONNECTED

GRAY'

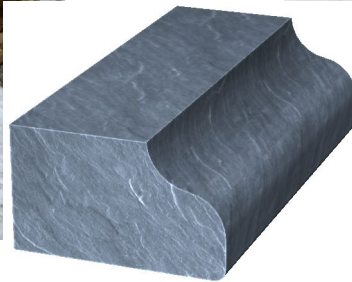
SEND TO TOM H - HOOD

https://www.supplyhouse.com/Broan-PM300SS-21-Inch-Custom-Range-Hood-Power-Pack-Insert-w-Easy-Install-System-CFM-300?utm_source=bingad&utm_medium=Shopping_HVAC&utm_campaign=Shopping_X_HVAC_X_SSC_New&utm_campaignid=590335619&utm_adgroupid=1227056094928802&utm_targetid=pla-4580290581102368&utm_product_id=PM300SS&utm_matchtype=e&utm_keyword=default&utm_adtype=&utm_adgroup=Ducting,%20Fans%20%26%20Venting_X_X_X&utm_searchquery=PM300SS%20BROMAN&utm_category=HVAC&msclkid=4225390aca8e1ae8fd6f50c47807b5c6

Countertop Selections



Unknown
Kitchen Countertops



$\frac{3}{4}$ " R Ogee Bevel Edge



Viatera - Anthem
Bathroom Countertops

Fireplace Surround Inspo

Wood and stone surround



Trim inspo in color walnut.



Unit A Lighting



Entry



Kitchen
Island



Four
Season
Porch



Owners
suite



Bedrooms
2, 3, & 4



Main floor bathroom
vanity



Lower level
bathroom vanity



Stair treads



Lower level
bedroom
closets



Owners
bath
vanity

Plumbing



Schlage Plymouth Knob in Matte Black

<https://www.schlage.com/en/home/products/FC21PLYFFFKIN.html>



Kitchen & Bathroom Hardware



Drawer pulls

<https://www.hdlusa.com/a36767-fb.html>



Cabinet Door Knobs

<https://www.hdlusa.com/a36765-fb.html>

Exterior Door

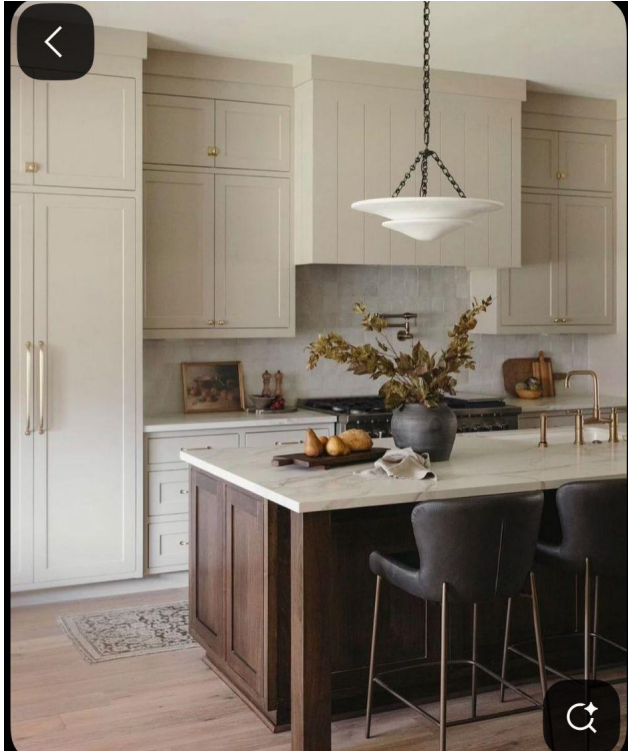
Single Cylinder Handleset and Plymouth Knob, Matte Black, Schlage

<https://www.schlage.com/en/home/products/F60PLYFFFPLY.html>



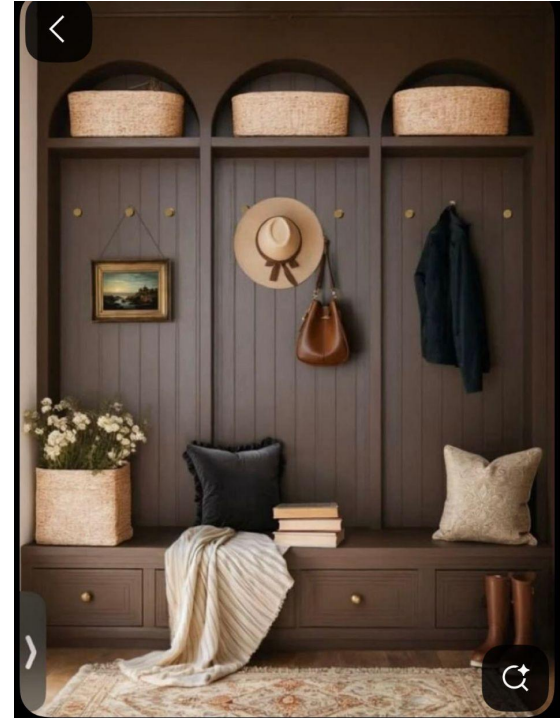
Kitchen Cabinet Inspo

Decide on upper paint color & change style from what we told Tom if we want?



Entry/Bench Inspo

Can change where the bench is on the wall



Kitchen Range Hood Inspo

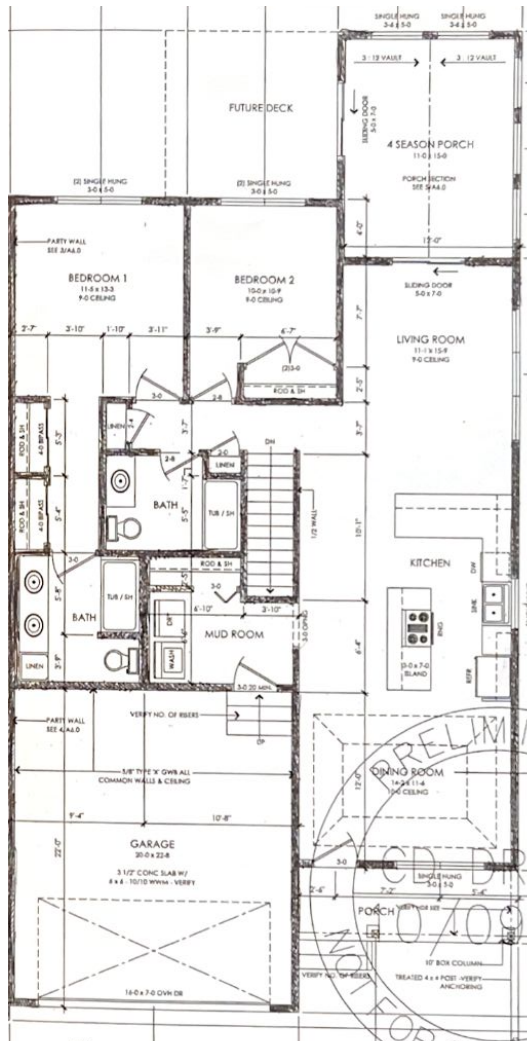
Putting the microwave in the island



Unit V

Contemporary/Modern

Unit V



- 1,328 sq. ft
- Contemporary/modern side
- Vaulted ceiling in dining room
- Front door entrance into dining room

Kitchen Cabinets

Painted uppers &
lowers

Flat front cabinets
and slab drawers

^ this is what we
told Tom, we could
still change it!



Flooring Selections



American Standard LVP
6202 Laguna
Throughout first floor

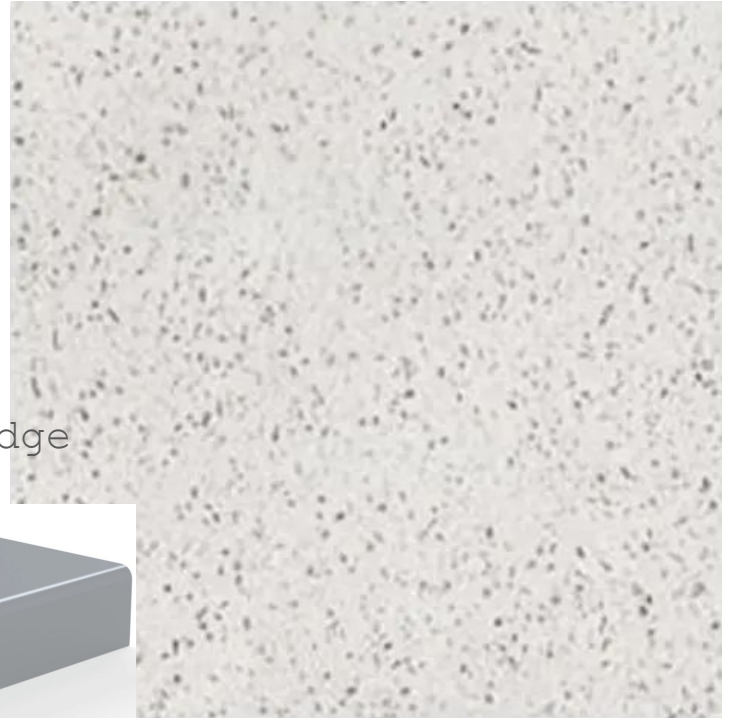


Mannington Vinyl
Oceana Tide
Basement Bathroom



Instyle Carpet
DreamWeaver, Beach
House

Countertop Selections



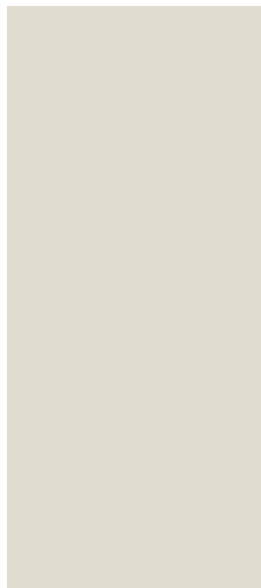
¼" Round Edge



Silestone - Miami Vena
Kitchen Countertops

Wilsonart - Abilene
Bathroom Countertops

Tile Selections



Mesmerist
Spirit MM30
4" Hex

Grout: #11, Snow White

Unit V Lighting



Living room ceiling



Kitchen Island



Kitchen sink



Lower level bathroom vanity

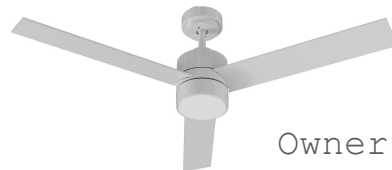


Main floor bathroom vanity



Stair treads

Four Season Porch



Owners suite



Bedroom 2



Owners bath vanity



Bedrooms 3 & 4

Plumbing



Bathroom faucets



Kitchen and Bathroom Hardware



https://www.hdlusa.com/a37624-cz.html?queryID=72eed828085c22ffb76902f106a99447&objectID=62998&indexName=PROD_default_products



https://www.hdlusa.com/a37632-cz.html?queryID=b6eda90dc44b2e082088c231f94934c9&objectID=62853&indexName=PROD_default_products Page 46 of 65

Schlage Plymouth Knob in Aged Bronze

<https://www.schlage.com/en/home/products/FC21PLYFFFKIN.html>



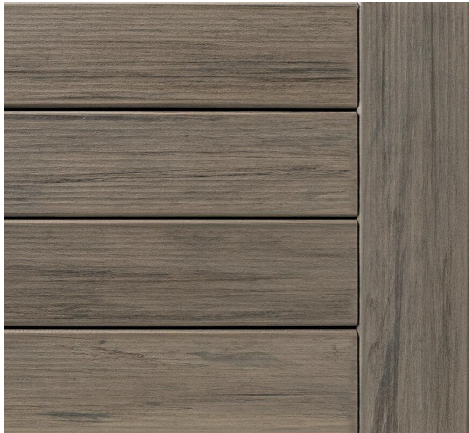
Exterior door

Single Cylinder Handleset and Plymouth Knob, aged bronze, Schlage

<https://www.schlage.com/en/home/products/F60PLYFFFPLY.html>



Exterior



Dutch Lap - Stone Harbour

Deck- Timbertech; composite ashwood

Kitchen Cabinet Inspo

Decide on paint color(s) & change style from what we told Tom if we want?





To	Date
Honorable Mayor Monge and City Council	April 21, 2026

Agenda Placement # IV.B

Topic(s)

Subject

Lead Water Service Line Inventory Program Update

Background/Facts

Since 2024, the City of North St. Paul has been actively implementing a Lead Service Line Inventory Program in response to the revisions to the U.S. Environmental Protection Agency’s (EPA) Lead and Copper Rule finalized in 2021. These revisions require all water service providers to develop and maintain an inventory identifying the material of every water service line within their system. The intent of this program is to use the inventory to eventually inform a replacement strategy for lead and galvanized steel water service lines to occur over time.

To support this effort, the City of North St. Paul received technical assistance grant funding from the Minnesota Department of Health (MDH). Through this funding, WSB, as the City's engineering consultant, assisted in the development of the initial inventory and to support planning efforts for a replacement program. Using a combination of historical records, field verification, and data analysis, the City has made significant progress toward establishing a full inventory. At the current state, our inventory sits at 2,821 non-lead water service lines (typically copper or plastic), 112 galvanized steel, 28 lead, and 1,831 unknowns subject to future ongoing investigation by the City to be determined.

As a recent development, the City of North St. Paul has been selected to participate in a Minnesota Department of Health pilot grant program that will use hydro-excavation (potholing) to verify service line materials on the street side of the water service line where historical documentation is incomplete or unavailable, at no cost to the City.

The City of North St. Paul is also working toward a phased replacement plan targeting known lead and galvanized service lines. The City has submitted an application to the Department of Health for funding to support construction of these improvements. The proposed replacement program is anticipated to be broken down into three-phased efforts, with construction, dependent upon availability of funding, to potentially begin in 2027 and continue through 2029.

Staff will provide a brief presentation outlining different aspects of this ongoing effort as well as be available to answer questions from the Council. The presentation will cover an overview of accomplishments to date under the Lead Service Line Inventory Program, outlines current inventory status, and summarizes the planned next steps to help improve public health and position the City for future grant funding opportunities.

Financial Impact

Recommended Action

No action required. This item is for information and discussion only.

Attachments

1. Council Presentation_North St. Paul

Respectfully submitted,
Morgan Dawley, City Engineer

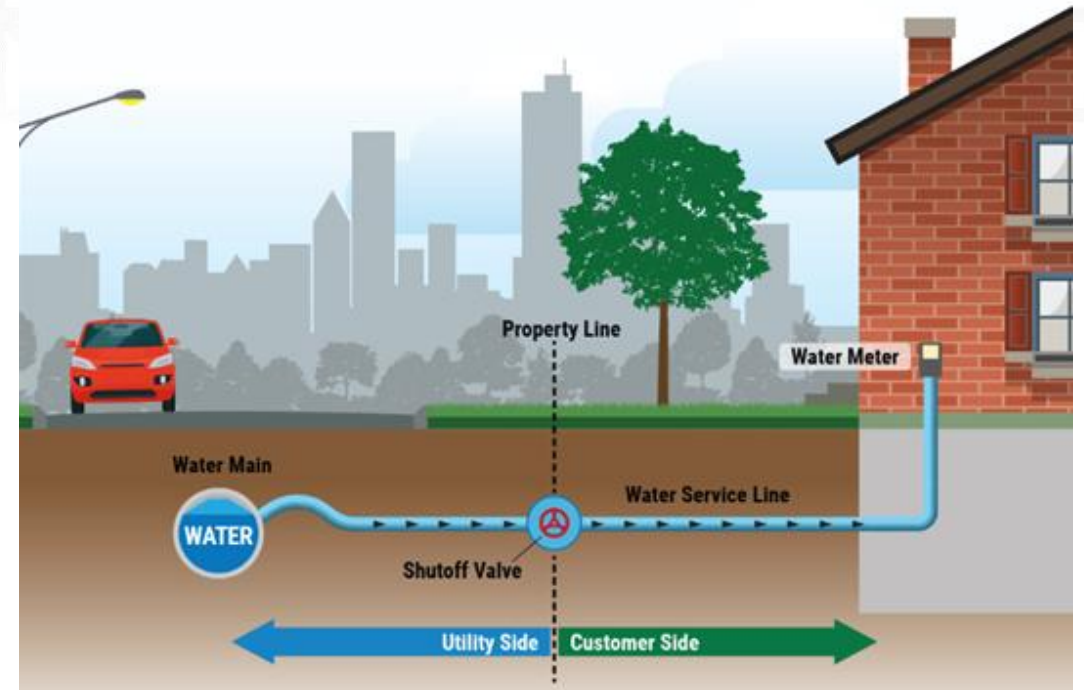


Lead Service Line Program

City of North St. Paul - WSB

LSL Program

- Water Service Line Refresher: The pipe that brings water to a home or business from the watermain in the street.
 - Broken down into two separate sections
 - Street Side- Watermain to curb stop
 - House Side- Curb stop to water meter
- Program Goal: Identify the entirety of the water service line material for every service. Linked to EPA Lead and Copper Rule Revisions requiring all water service providers to submit inventory



LSL Program

Long Term Goals

- Use the established inventory to apply for funding to replace water service lines made of lead and galvanized steel
- Advance infrastructure management of water service lines

Inventory Funding

- MDH provided technical assistance grants for WSB to assist North St. Paul



2024 Program Summary

- WSB began technical assistance in 2024 providing
 - GIS work to set up digital inventory
 - As-built and historical document review
 - Public engagement (postcards/ doorhangers/ website/ social media)
 - In-home inspections
 - Open House

WE NEED YOUR HELP!

NORTH ST. PAUL WATER SERVICE LINE INVENTORY PROJECT

The U.S. EPA is working to get lead out of drinking water by replacing lead and galvanized water service lines (pipes that carry water). As a part of this effort, North St. Paul is creating an inventory of all water service line materials in the City.



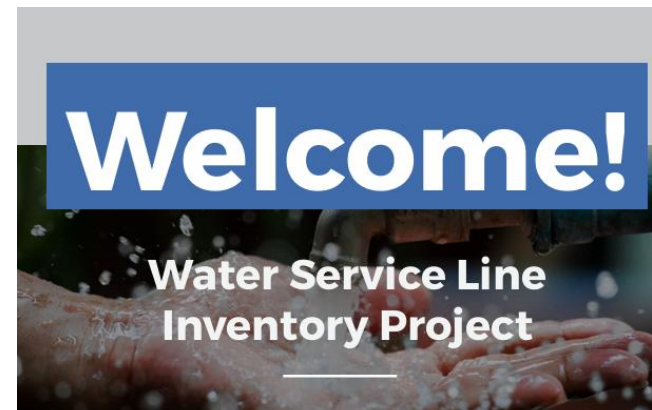
Please follow the QR code or visit the below website to learn how to identify your water service line material and submit the information to the City by **June 7, 2024**.

North St. Paul is happy to assist you in identifying your water service line material. Please schedule a free appointment by visiting the website below or calling 651.747.2400.

northstpaul.org/waterserviceline

IF YOU'RE INTERESTED IN LEARNING MORE, WE'RE HOSTING AN OPEN HOUSE

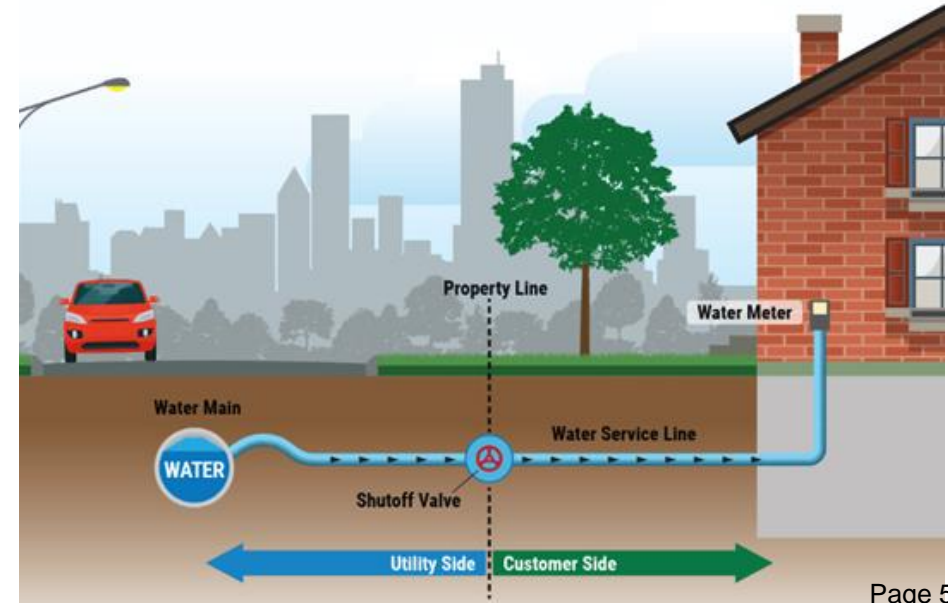
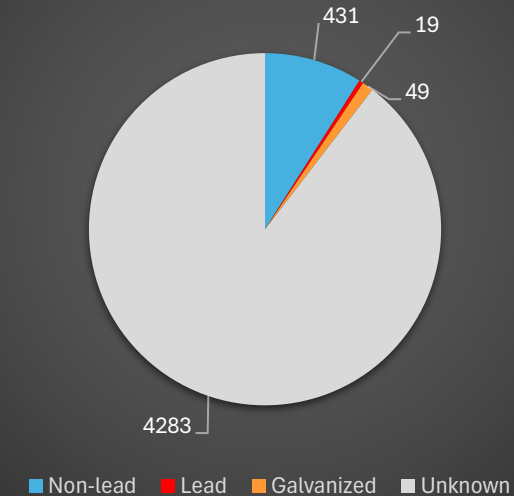
APRIL 17 FROM 6:30 – 8 P.M.
AT NORTH ST. PAUL CITY HALL



2024 Program Summary

- At the end of the program, we were left with the follow inventory
 - Non-lead – 431
 - Lead- 19
 - Galvanized- 49
 - Unknown- 4283
- The large unknown number can be broken down into the following
 - Both Sides – 2284
 - Just House Side - 813
 - Just Street Side - 1186

North St. Paul Service Line Inventory
2024



2025 Grant & Achievements

- For 2025, the City applied for a technical assistance grant to improve our inventory
- The City received a maximum grant of \$75,000 for the fall of 2025
- With the funding, WSB completed
 - Additional historical research
 - Platting analysis with inspection insight
 - Additional public engagement
 - Door knocking on all unknowns
 - In-person inspections
 - GIS updates

WE NEED YOUR HELP!

NORTH ST. PAUL WATER SERVICE LINE INVENTORY PROJECT

The U.S. Environmental Protection Agency is working to get lead out of drinking water by replacing lead and galvanized water service lines. All cities that have drinking water systems, including North St. Paul, are required to create an inventory of all water service lines and what they're made of in 2024.

We need you to:

1. Identify the material of your water service line
2. Report it to the City by June 7

Please follow the QR code or visit the website below to learn how to identify and report your water service line material.

North St. Paul is happy to assist you in identifying your water service line material. Please schedule a free appointment by visiting the website below or calling 651.747.2400.

<https://northstpaul.org/waterserviceline>

ACTION REQUIRED

Report your water service line material.

The Minnesota Department of Health is requiring us to complete a water service line inventory to improve drinking water standards. Please report your water service line material or schedule a free home visit for assistance in reporting by **September 1st, 2024.**

Your help is crucial in completing the water service line inventory. **Help the City today!**

Scan the QR code or visit the URL below to report your water service line material and schedule an optional free home visit for assistance.

<https://northstpaul.org/waterserviceline>

PLEASE TEST YOUR WATER SERVICE LINE

IT'S QUICK AND EASY!

NORTH ST. PAUL LEAD SERVICE LINE PROJECT

North St. Paul is creating an inventory of all water service line materials in the city. The pipes that carry water to your home can be made of a few different materials, including lead. Please help us complete the inventory to identify lead pipes.

Test your water service line yourself or schedule a free inspection. Scan the QR code or visit nisp-wsbeng.hub.arcgis.com

What to Look For:

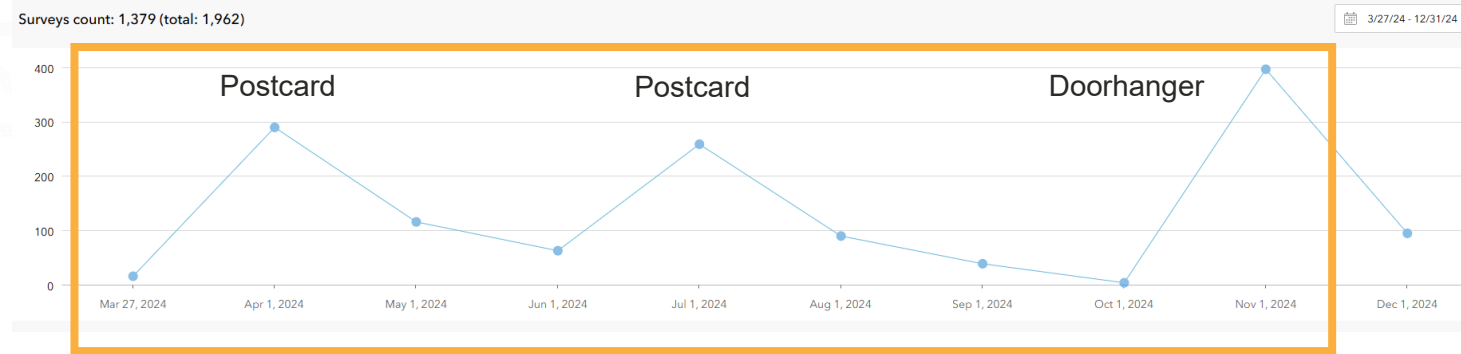


Call: 651-728-7499 Email: NorthStPaul.SL@wsbeng.com Web: nisp-wsbeng.hub.arcgis.com

Inspection Results

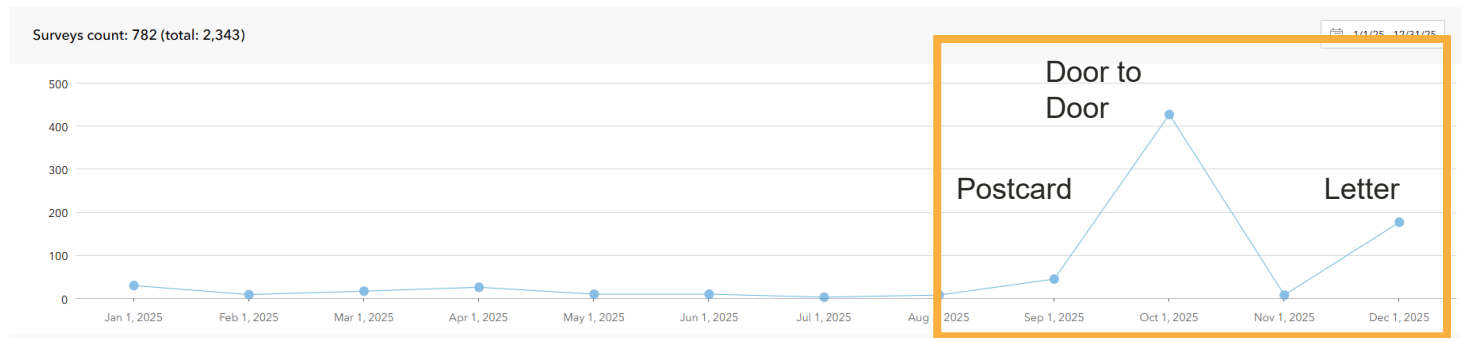
- Over the last 2 years there have been 2161 inspections completed
 - Resident self-inspections
 - Public works staff inspections
 - WSB staff inspections
- Only provide information on home side (Curb Stop to Home)
 - If we don't know the street side, the home will stay as unknown

2024 Inspections: 1379



March- November Program

2025 Inspections: 782

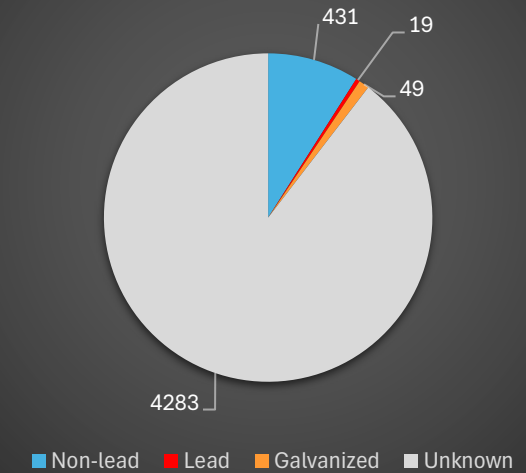


August- October Program

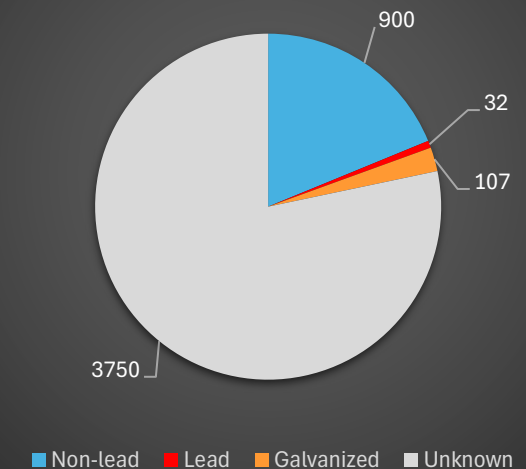
2025 Results

- Grant funding lasted from the beginning of August to the end of October
- At the end of the program, our inventory had the following stats
 - Non-lead: 900
 - Lead: 32
 - Galvanized: 107
 - Unknown: 3750
- This shows that 533 unknowns were discovered over the course of the grant funding

North St. Paul Service Line Inventory 2024

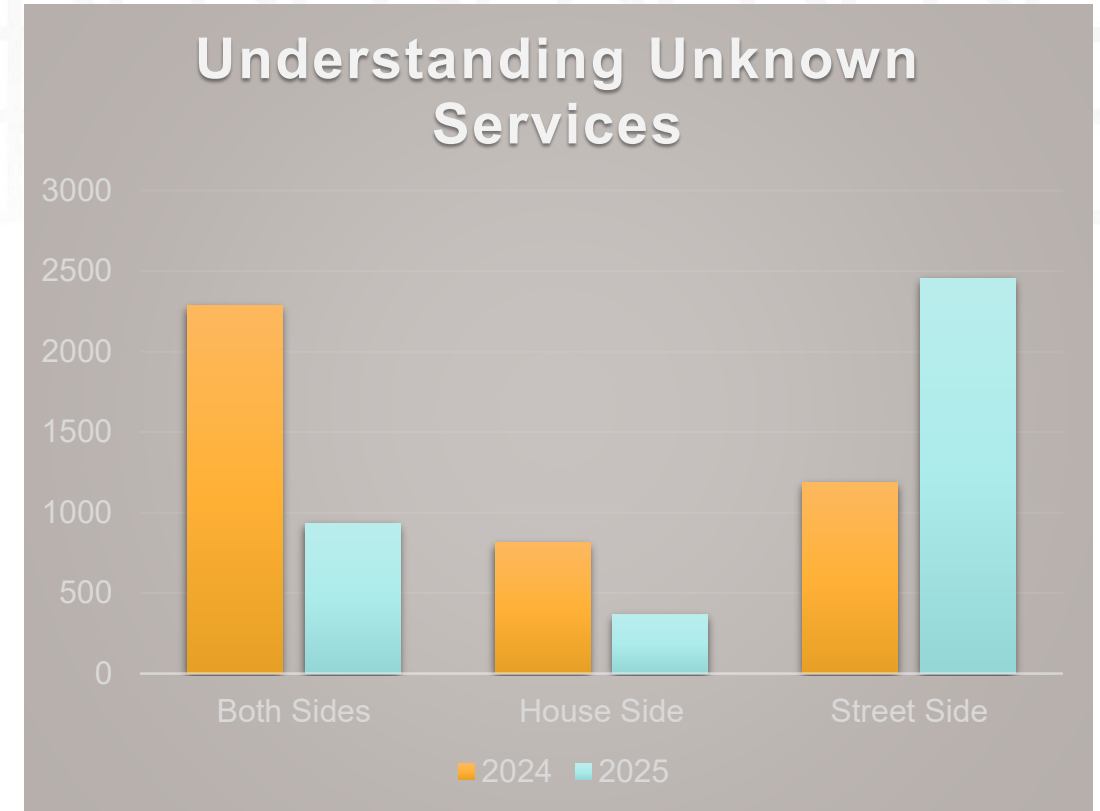


North St. Paul Service Line Inventory 2025



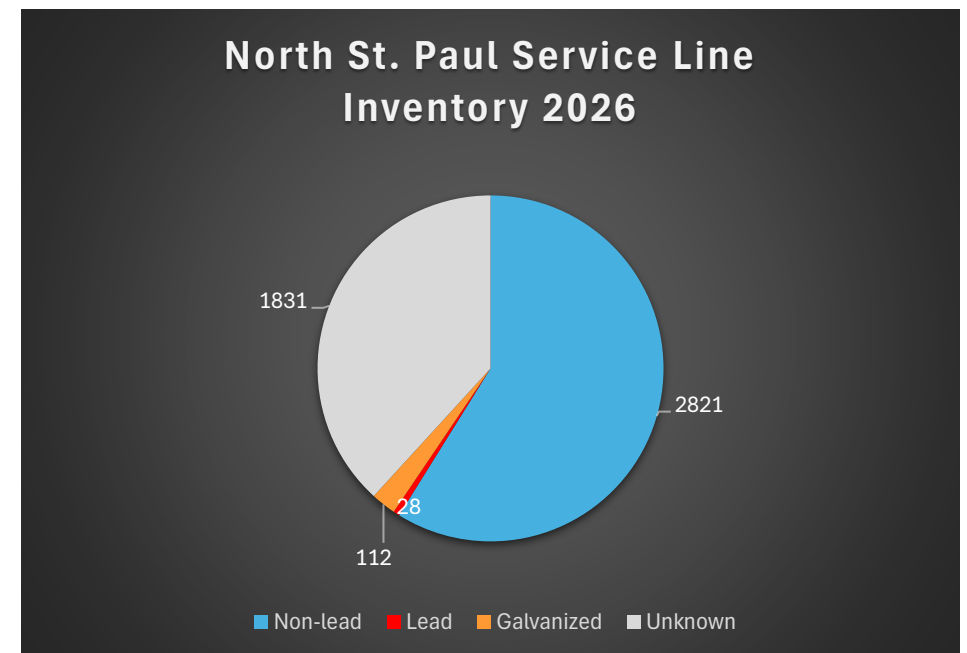
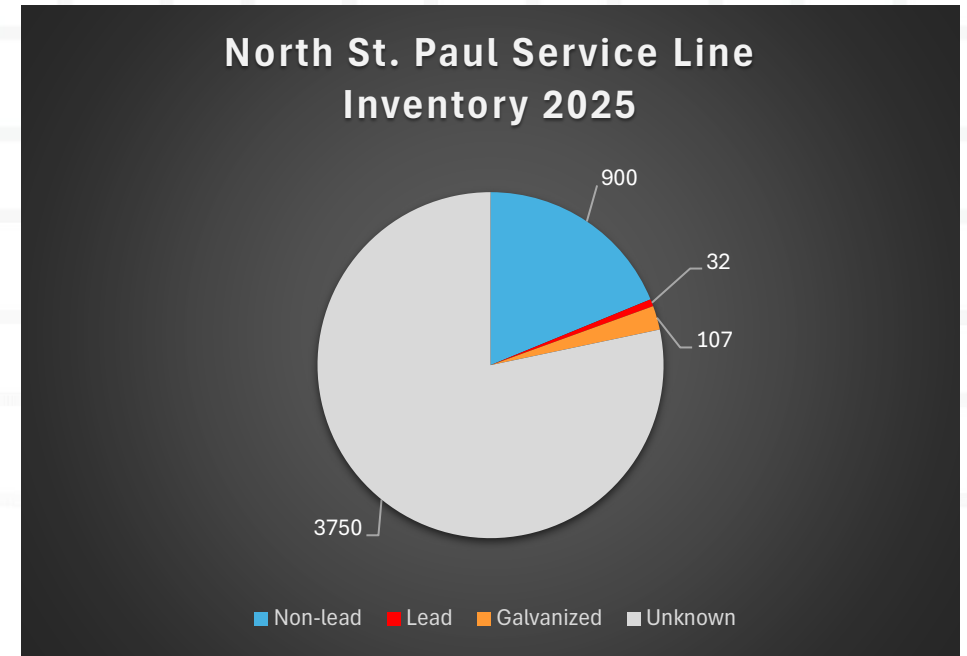
2025 Results

- The large unknown number can be broken down into the following
 - Both Sides – 931
 - Just House Side - 366
 - Just Street Side - 2454
- 7.6% of house side are unknown
- 51% of street side are unknown



2026 Adjustments

- Per updated direction from MDH, additional unknowns were removed through further analysis of existing data and statistical analysis
- Additional Data From
 - Maplewood and St. Paul Regional Water
- At the end of the program, our inventory had the following stats
 - Non-lead: 2665
 - Lead: 28
 - Galvanized: 112
 - Unknown: 1987
- This shows that 1763 unknowns were discovered from additional analysis



Next Steps

- Lead & Galvanized service lines (140) – Replacement
 - NSP has divided replacements into 3 proposed phases which are proposed to be completed in the next 3 years (starting in 2027)
 - NSP has applied for funding through the State for all 3 projects
- Unknown Services (1831) – Potholing
 - NSP applied and was selected for the MDH potholing pilot program in 2026 (1 out of 36 cities selected).
 - This will include hydro excavating at the curb stop to verify existing material classification and gain insight on unknowns.



Next Steps

- Anticipated Replacements
 - Dependent upon availability of funding
 - Phase 1 will remove all known lead service lines
 - Phasing based on MDH prioritization criteria through census block data
 - Children Under 5
 - Families under 200% of poverty
- Continued Investigations into Unknowns
 - Additional potholing with statewide program arriving next year
 - Continue to refine inventory and complete inspections

